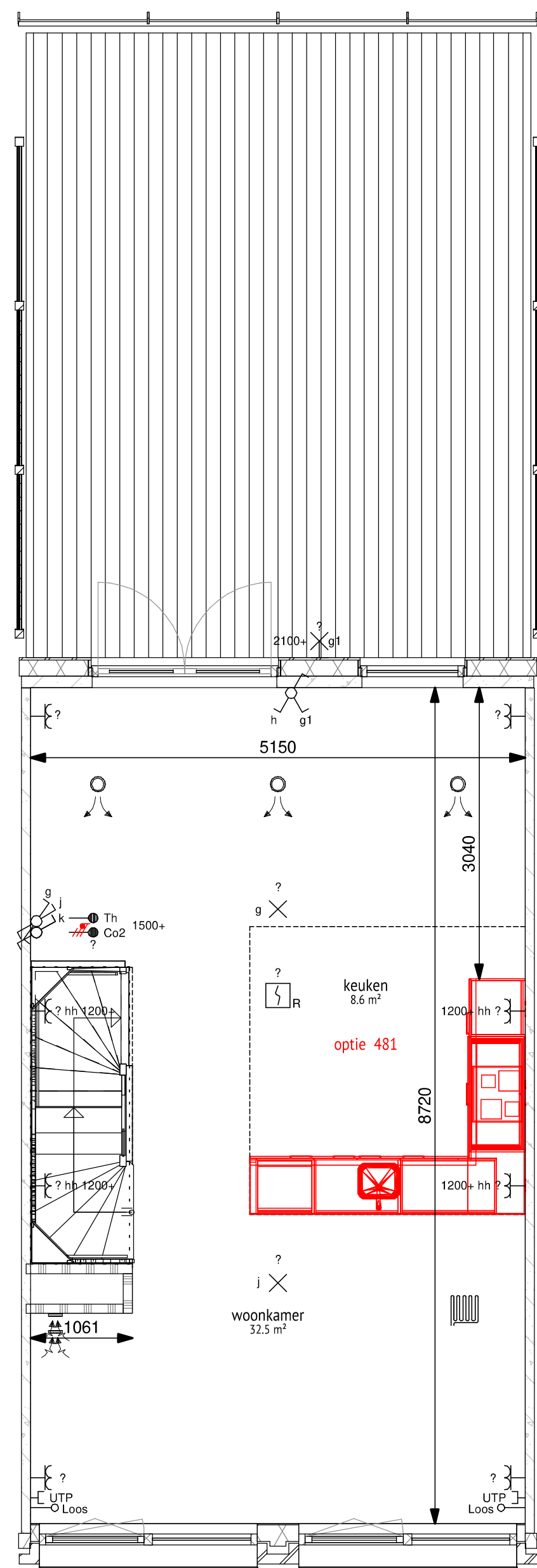
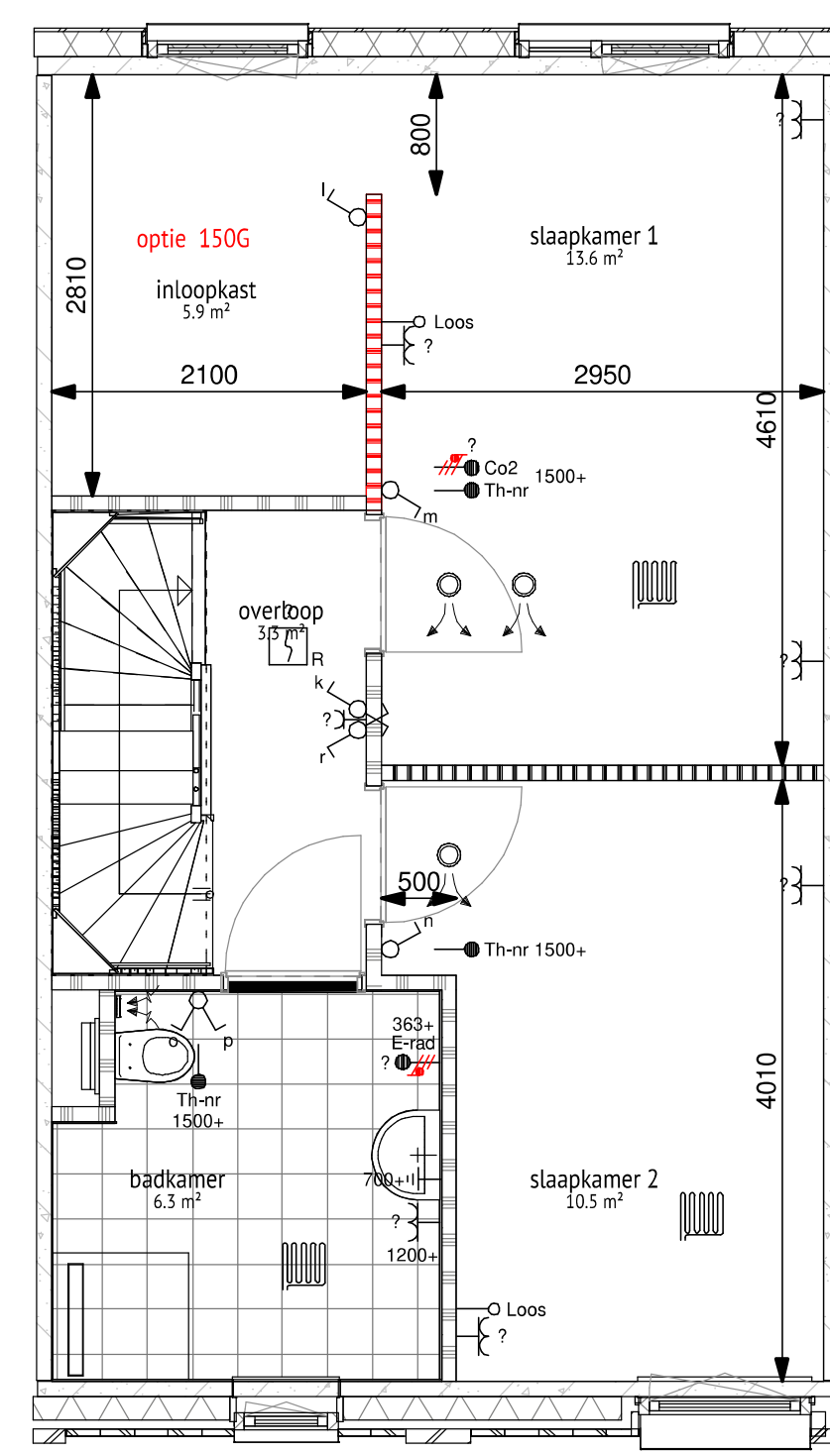
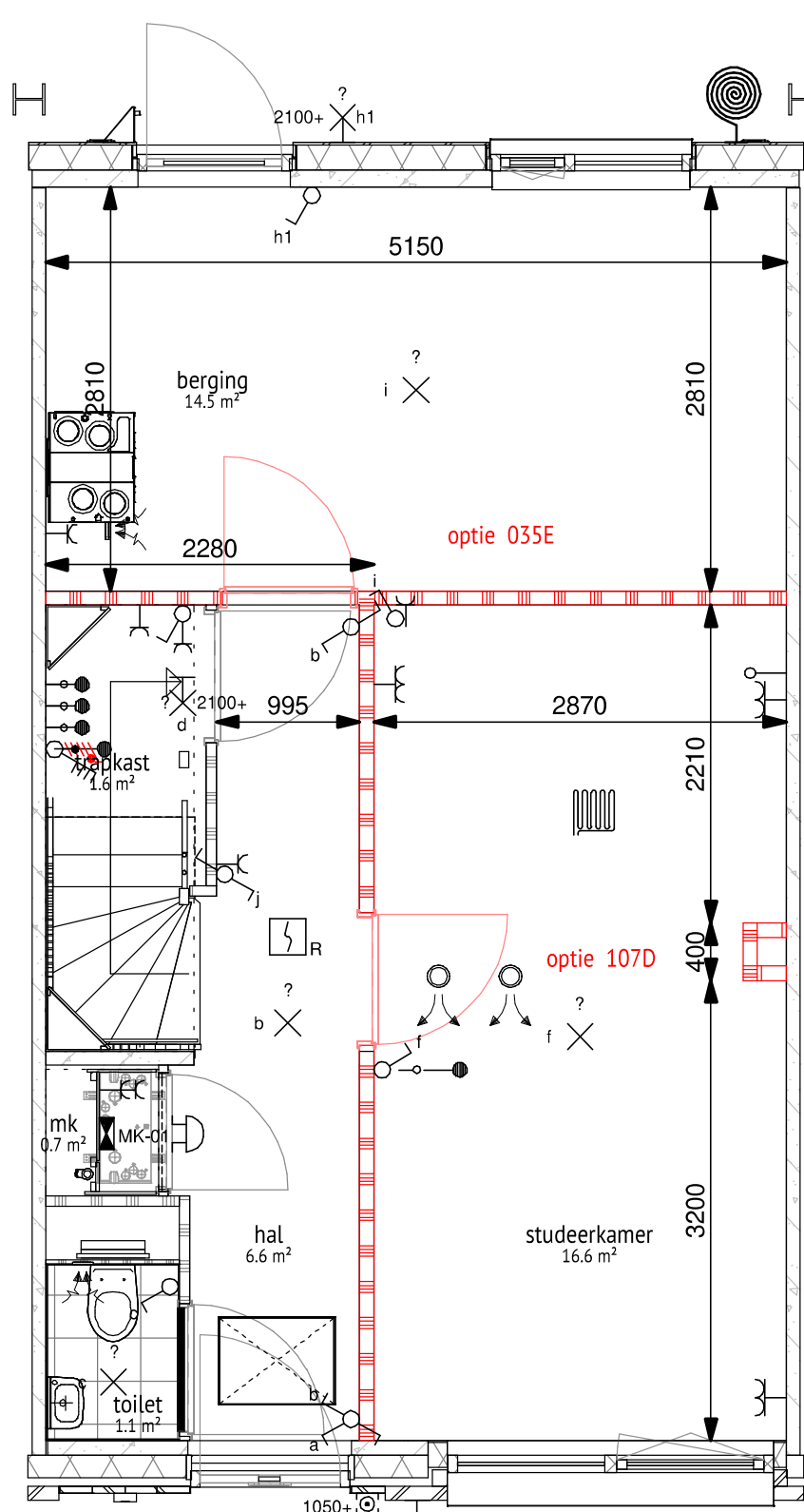
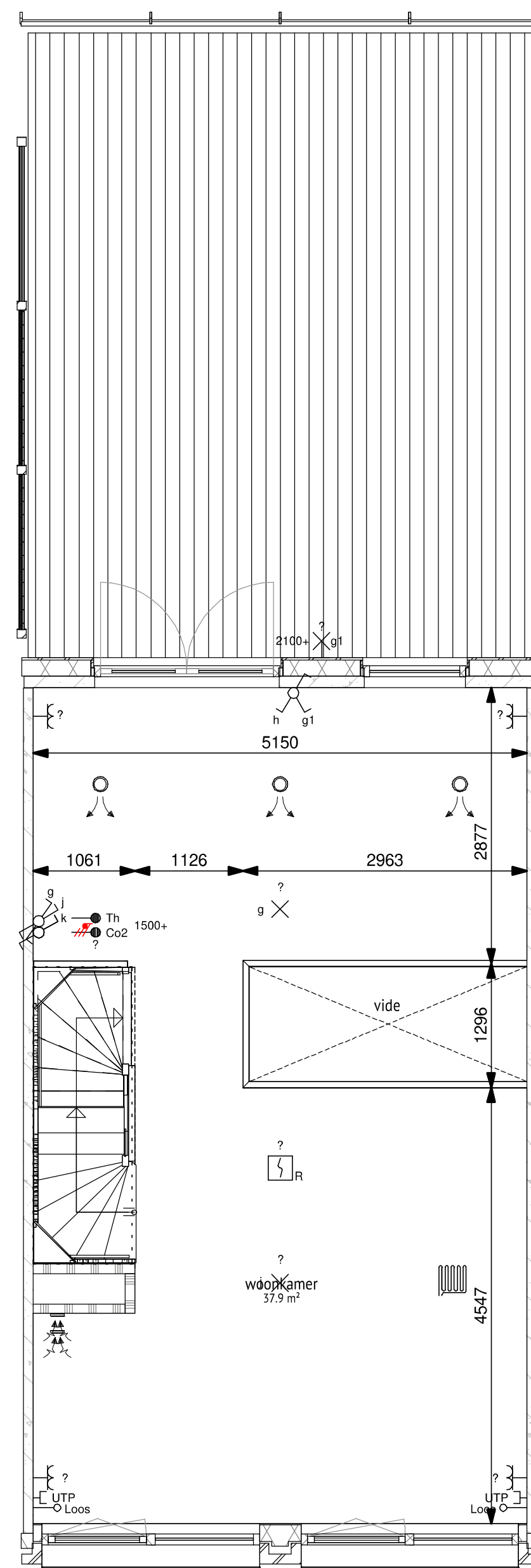


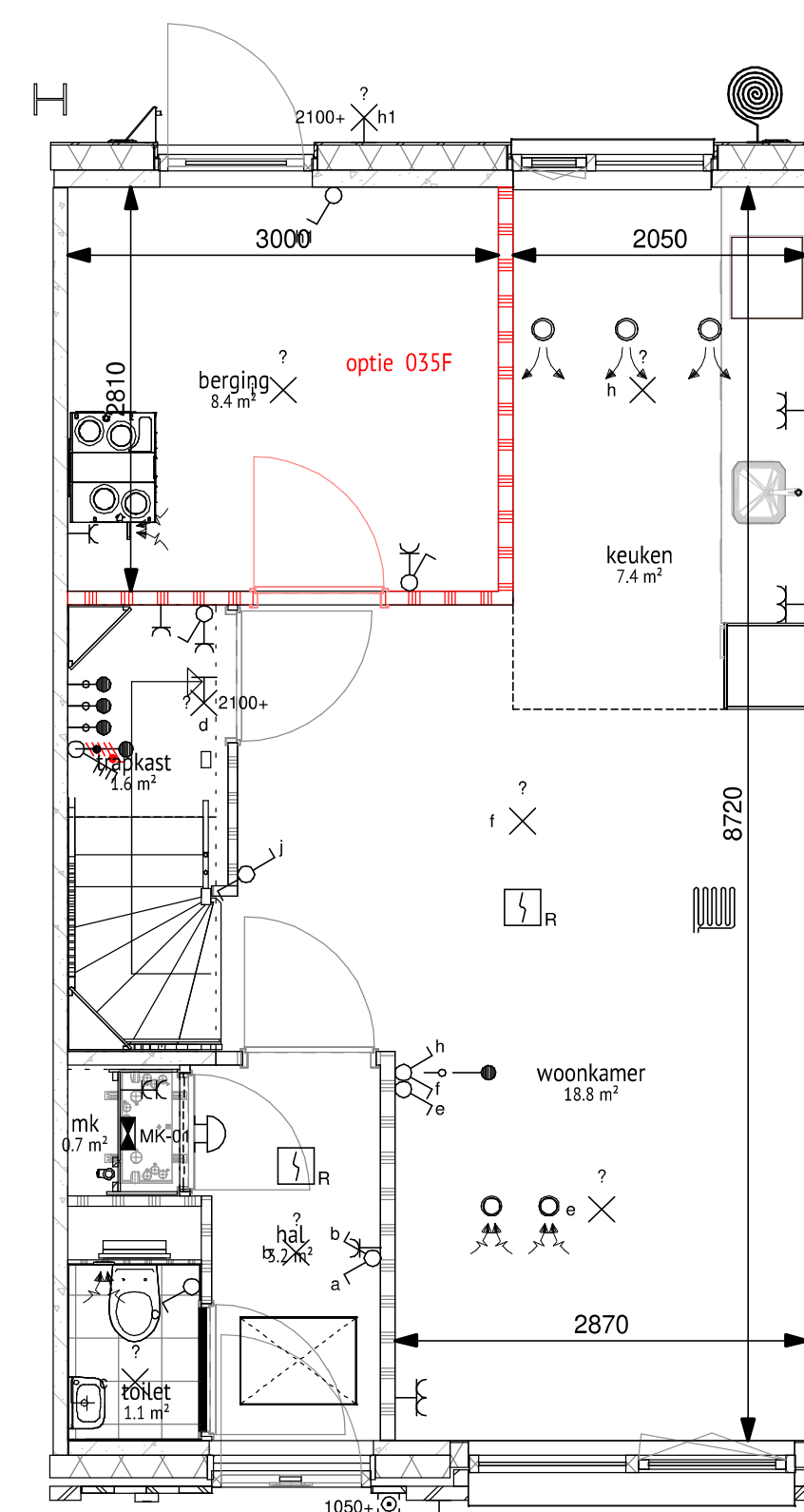
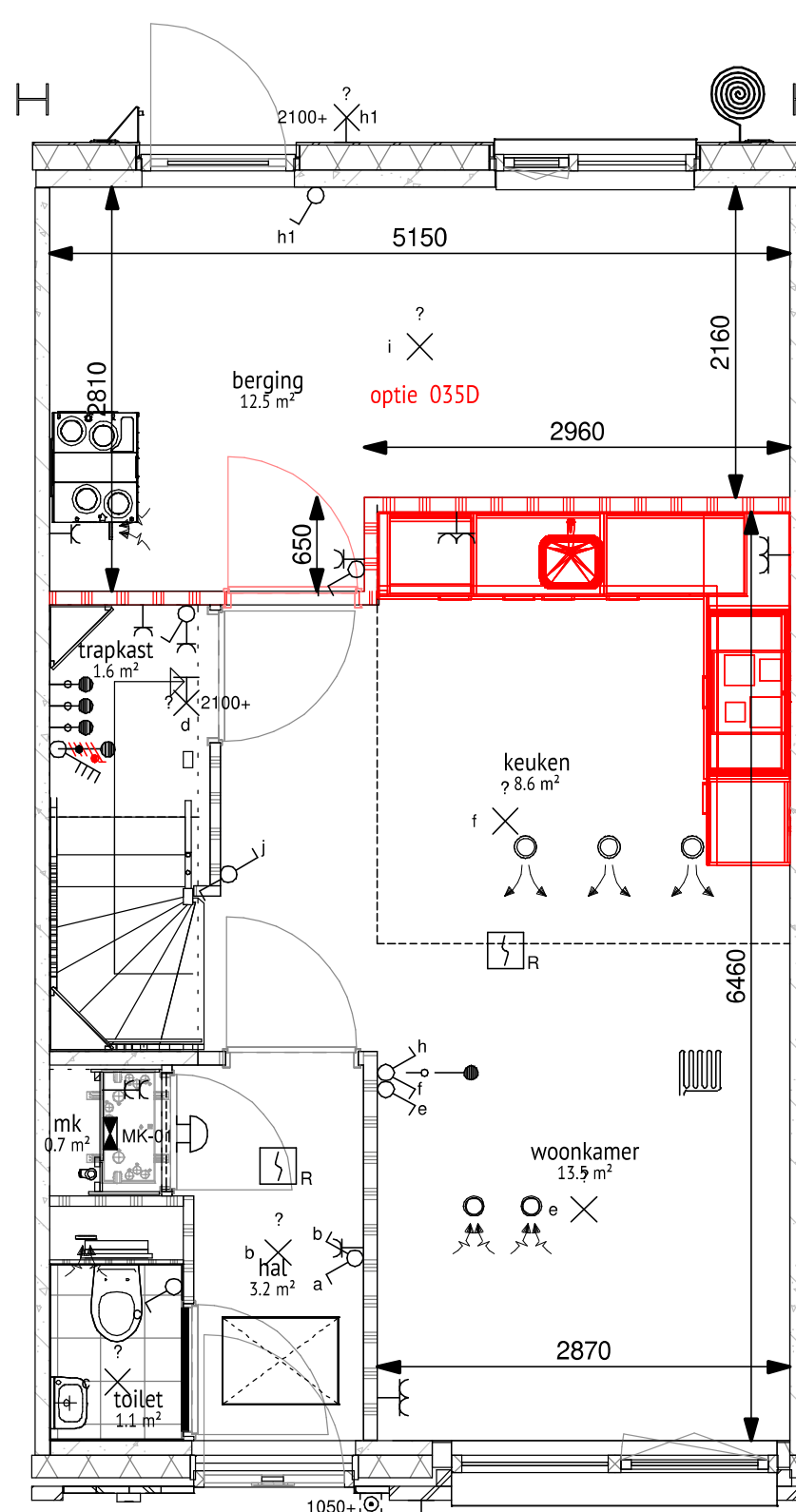
02 tweede verdieping



01 eerste verdieping



00 begane grond



TYPE 09b/C4

**RENVOOI MATERIALEN**

- metselwerk
- prefab. gevel eps 170mm + 20mm steenstrip
- betonwand
- isolatie
- lichte scheidingwand 100mm / 70mm
- lichte scheidingwand 100mm, geluïdwerend
- wandopzetwerk
- basis woning
- optie woning

**DAAD**  
DAAD Architecten B.V.

opdrachtgever: **Trebbe**

werk: **Newton Park Enschede**

onderwerp: **Bouwnummers 71,72,73 - opties**

gewijzigd:

a.	datum	01-06-2022
b.	schaal	1:50
c.	formaat	A0
d.	werk/nr.	<b>20008</b>
e.		
f.	blad/nr.	<b>DO.163</b>
g.		

Platz 21  
9411 PM  
Bellen  
Nederland  
+31(0)93 582 450  
info@daad.nl

C:\Users\DAAD\Documents\NewtonPark\71,72,73\Opties\DAAD\_A0C4\_C2\_02\_163\_TREBBE.dwg