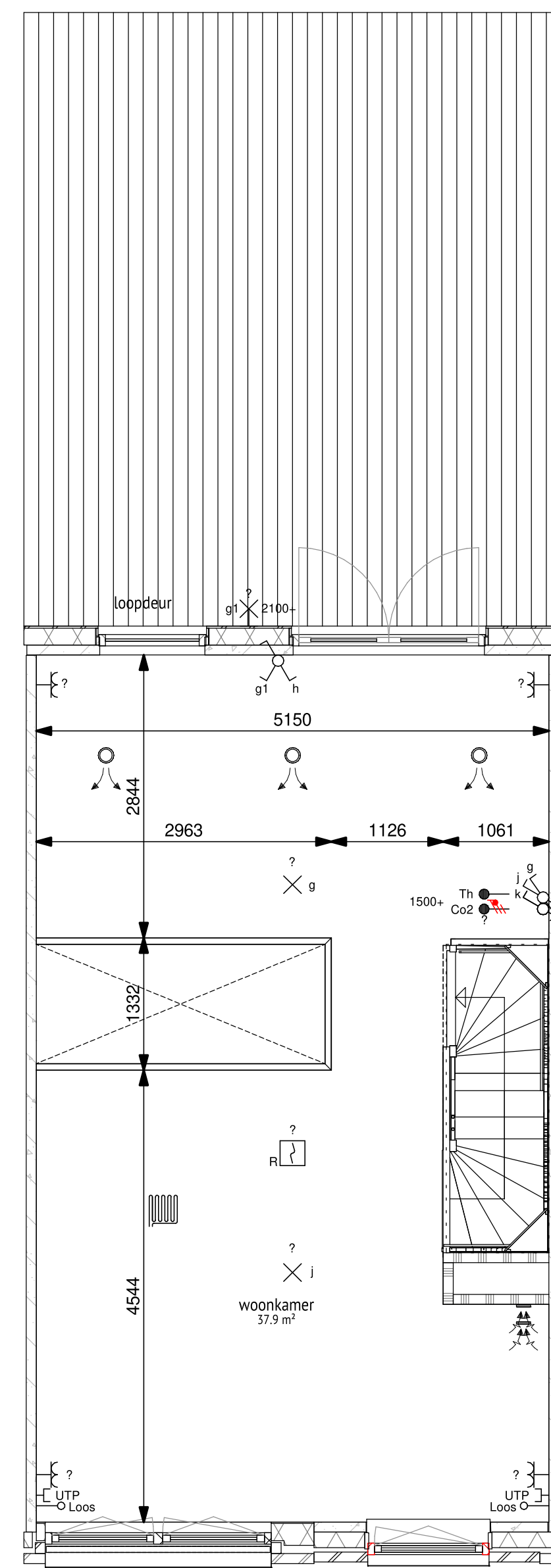
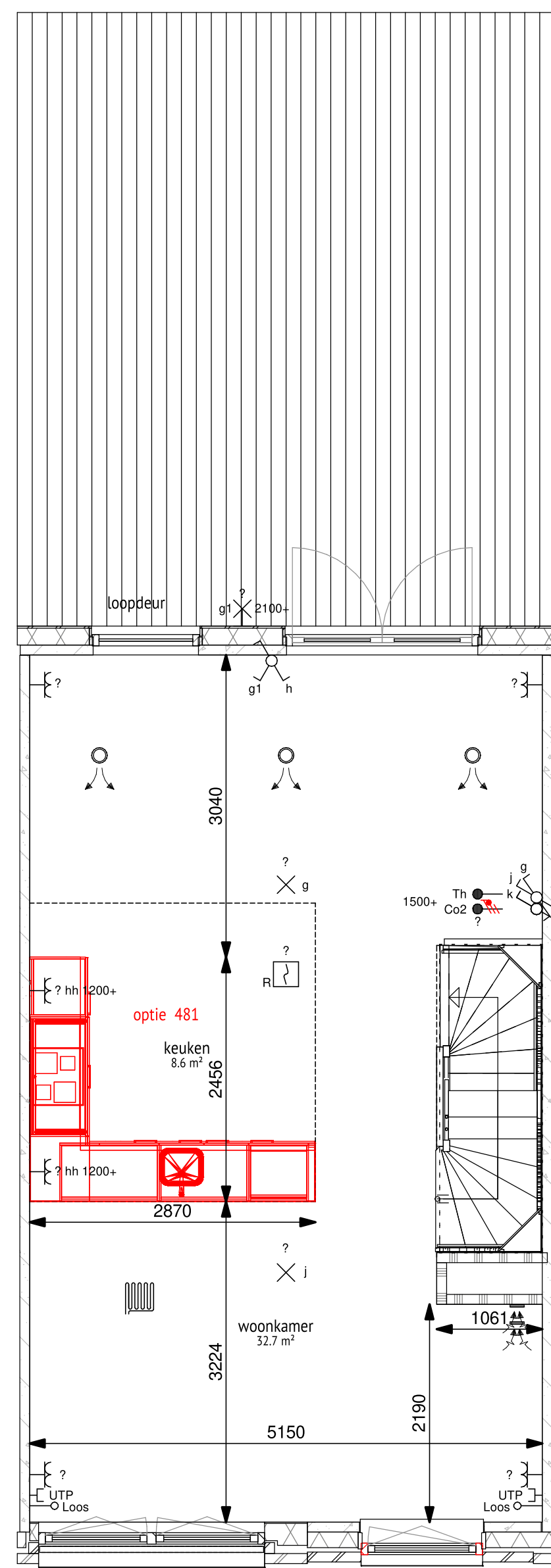
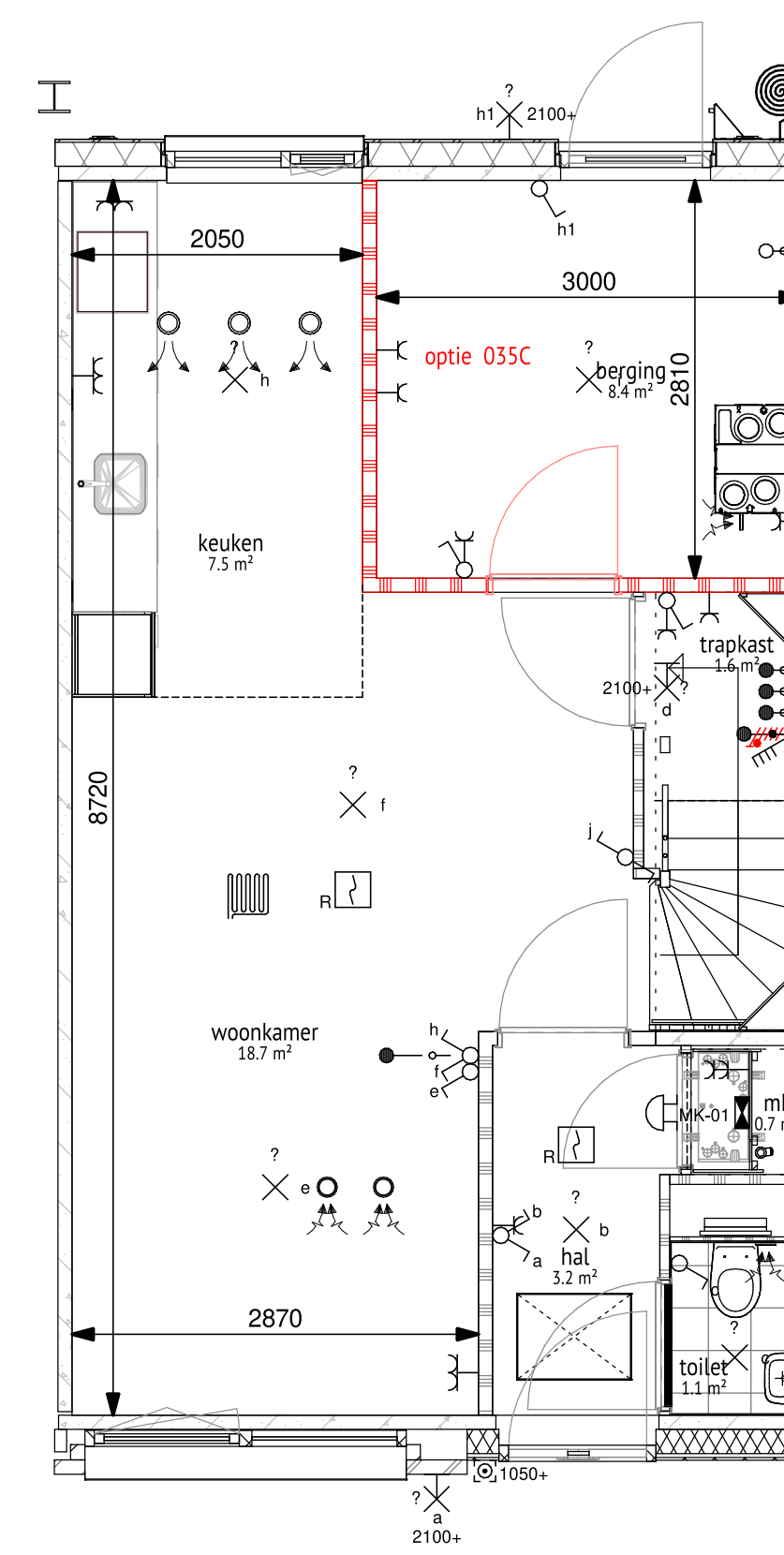
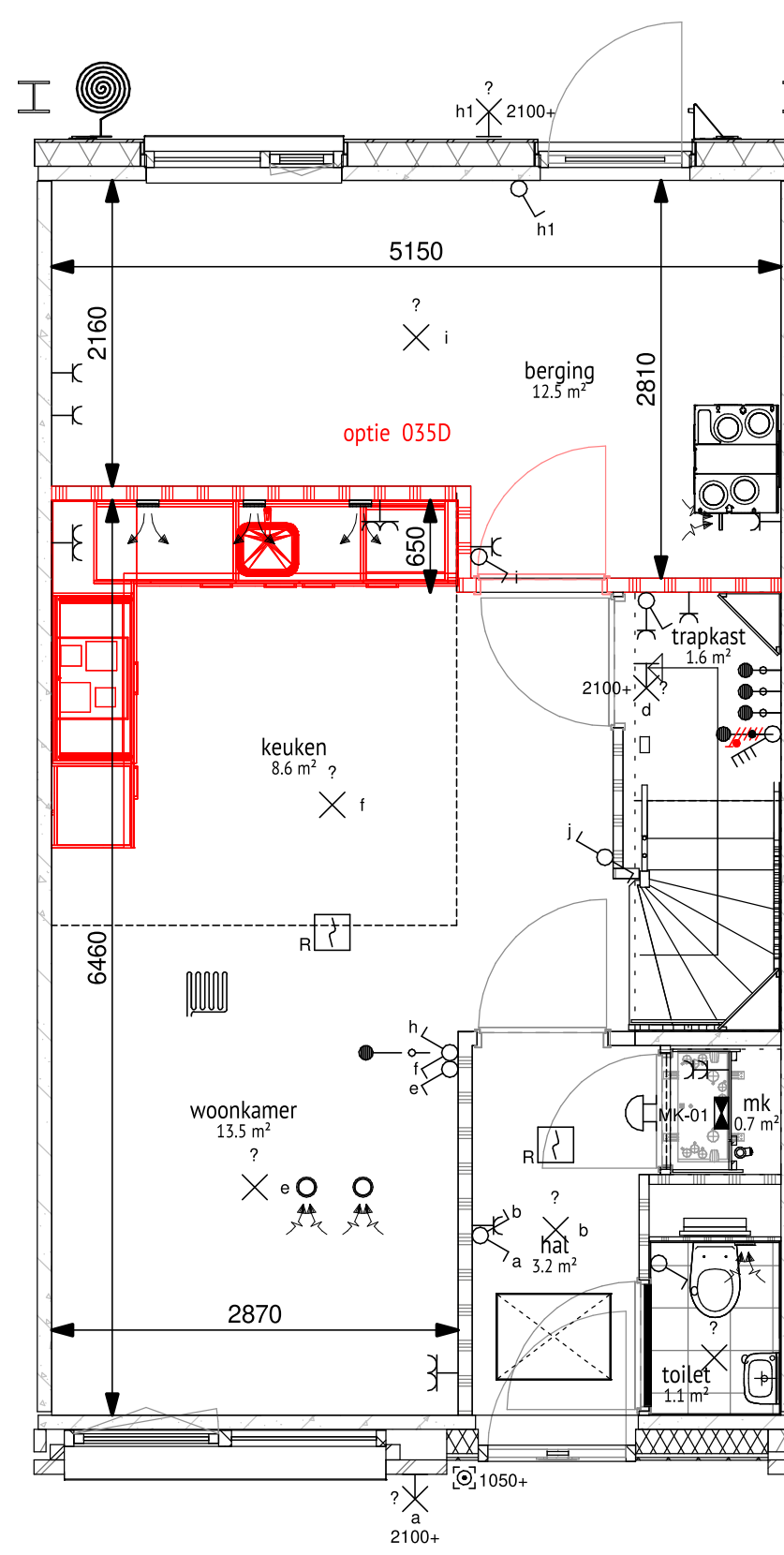
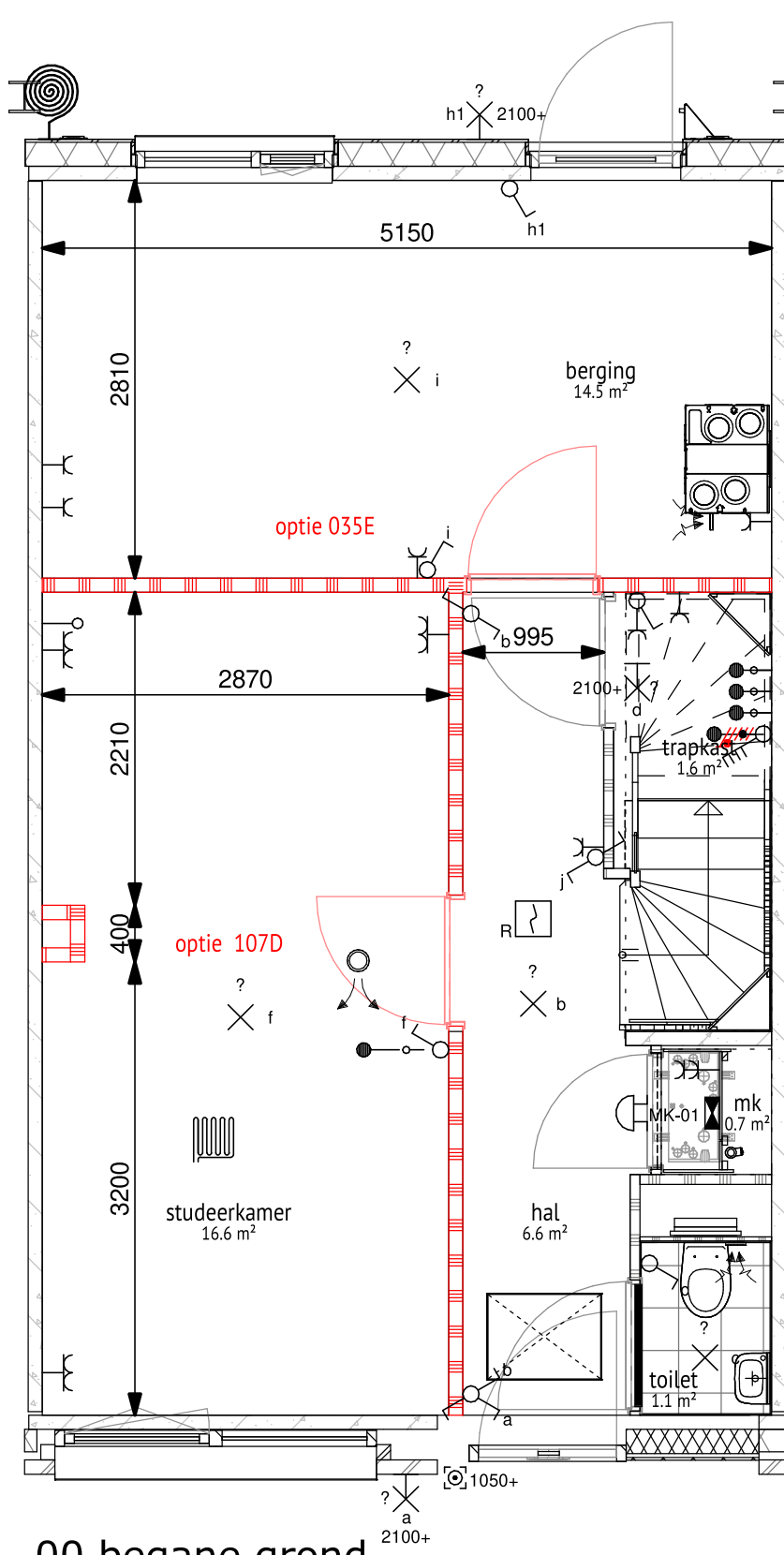


02 tweede verdieping



01 eerste verdieping



00 begane grond

TYPE 09a/C3

RENVOOI MATERIALEN	
	metaalwerk
	prefab gevel eps 170mm + 20mm steenstrip
	betonwandaal
	isolatie
	lichte scheidingswand 100mm / 70mm
	lichte scheidingswand 100mm, geluïdwerend
	wandstapelwerk
	basis woning
	optie woning

DAAD

opdrachtgever: **Trebbe**

werk: **Newton Park Enschede**

onderwerp: **Bouwnummers 67,68,69,70**

gemaakt door: **DAAD Architecten B.V.**

datum: 01-06-2022

schaal: 1:50

formaat: A0

werknr.: **20008**

bladvr.: **DO.161**

DAAD Architecten B.V.
 Paltz 21
 9411 PM
 Balken
 Nederland
 +31(0)593 562 450
 info@daad.nl