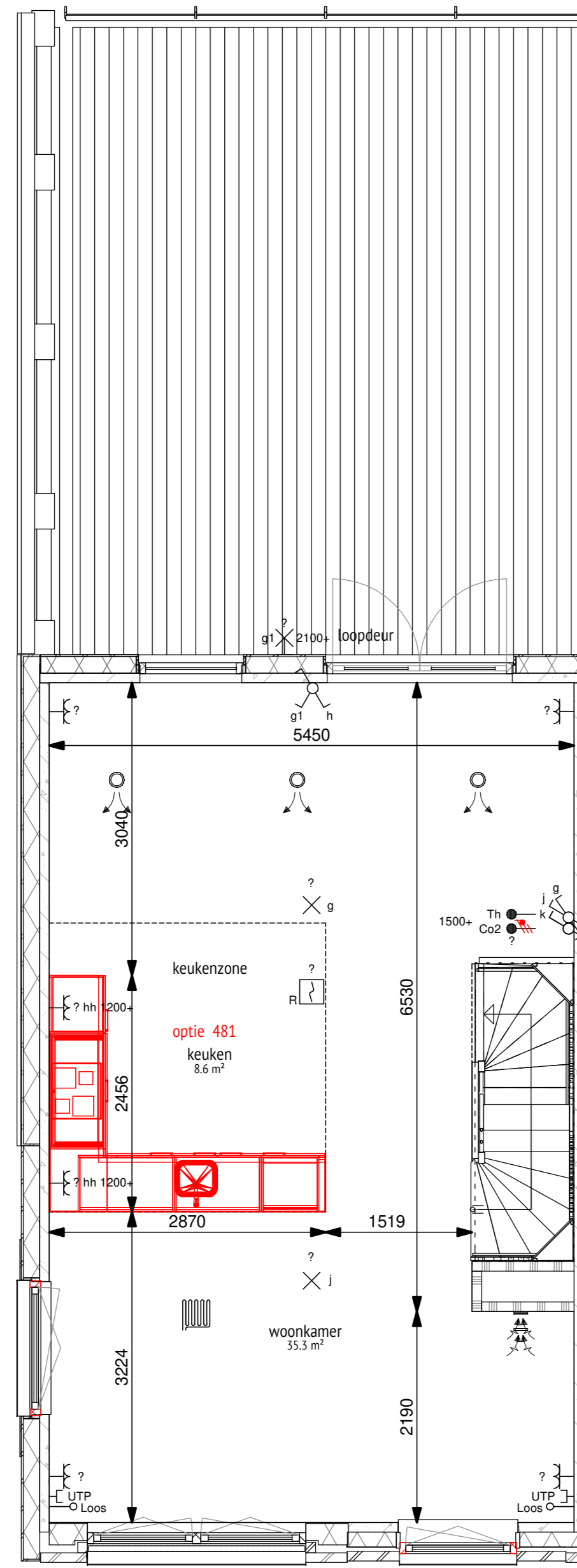
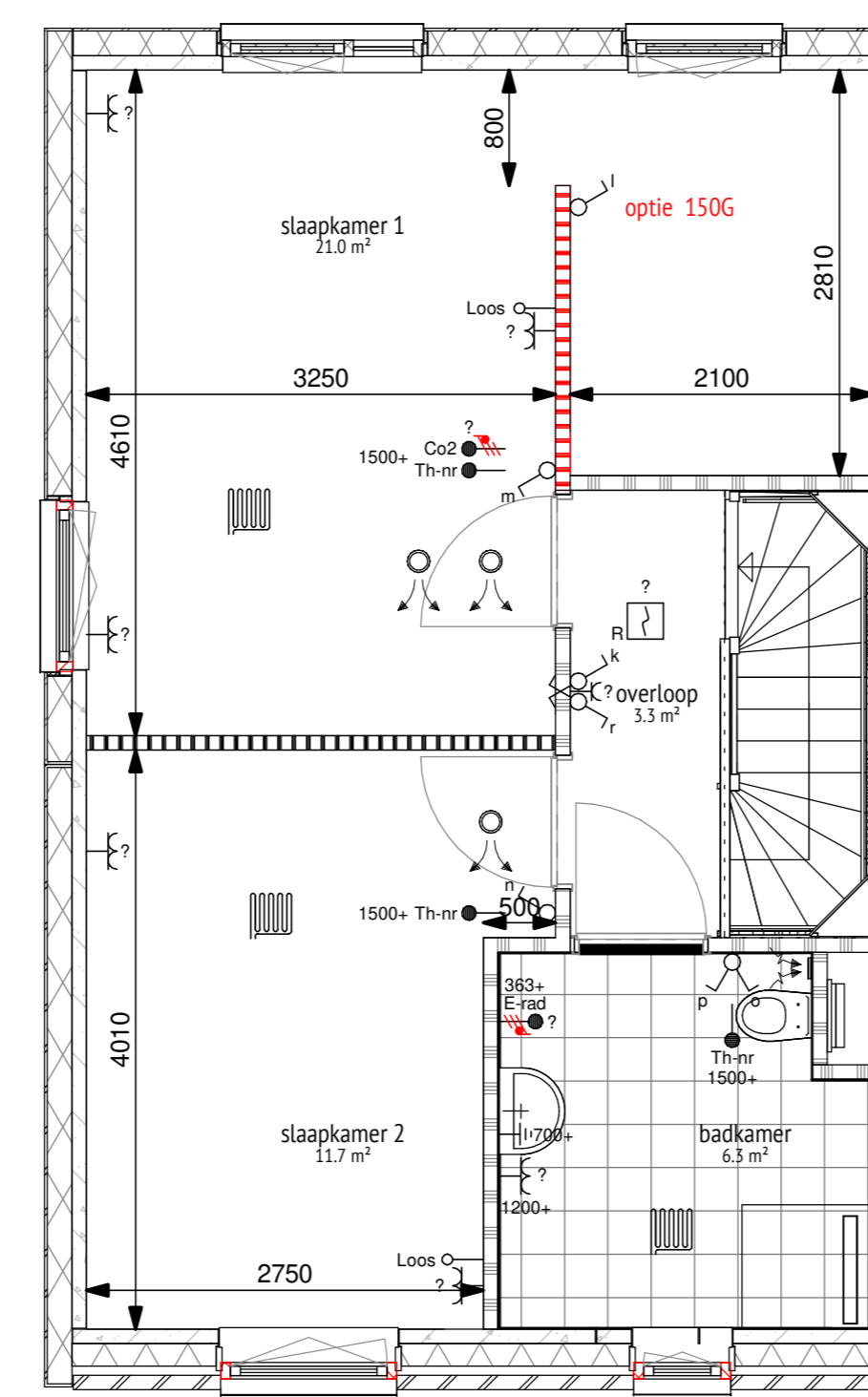
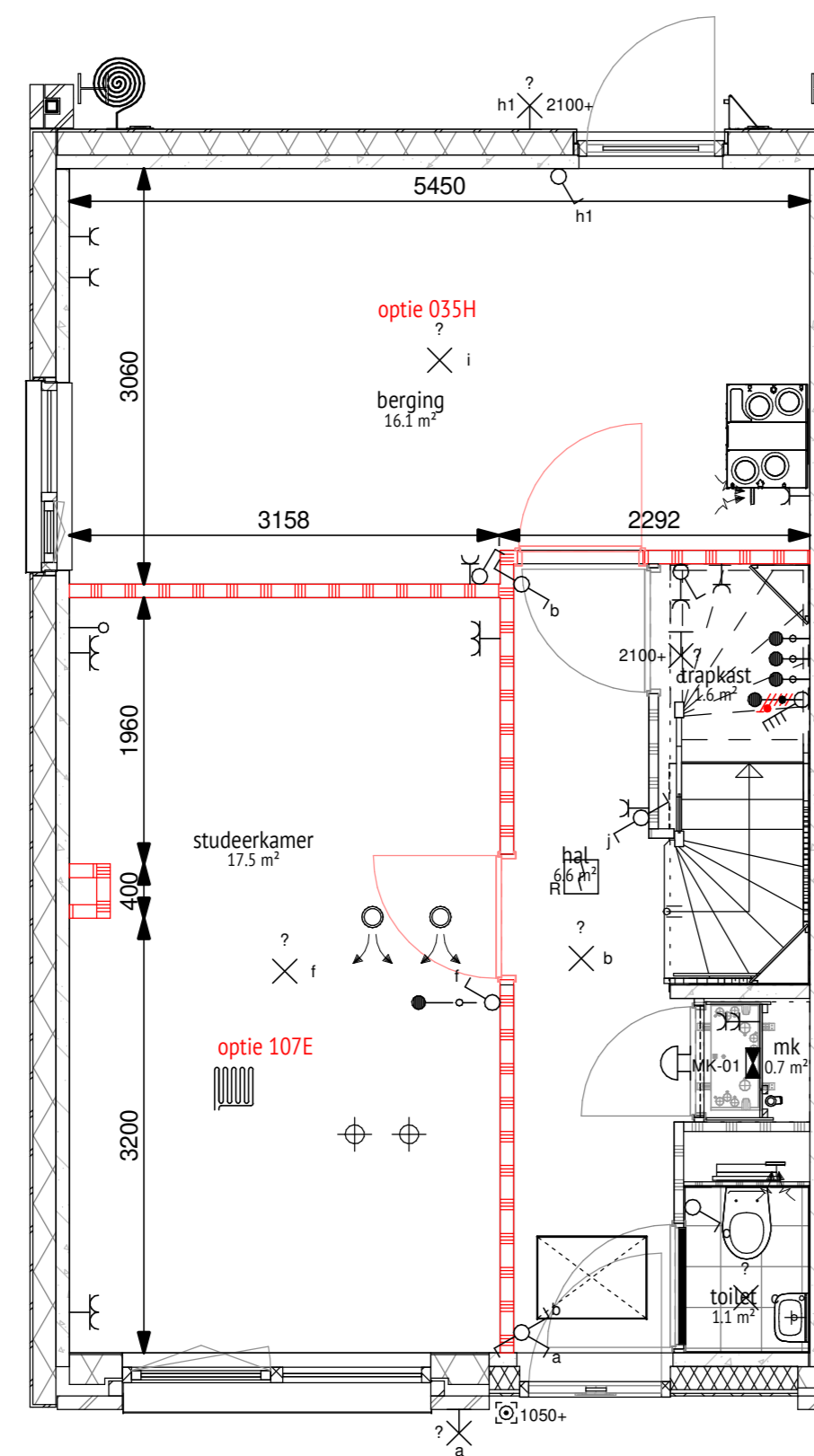
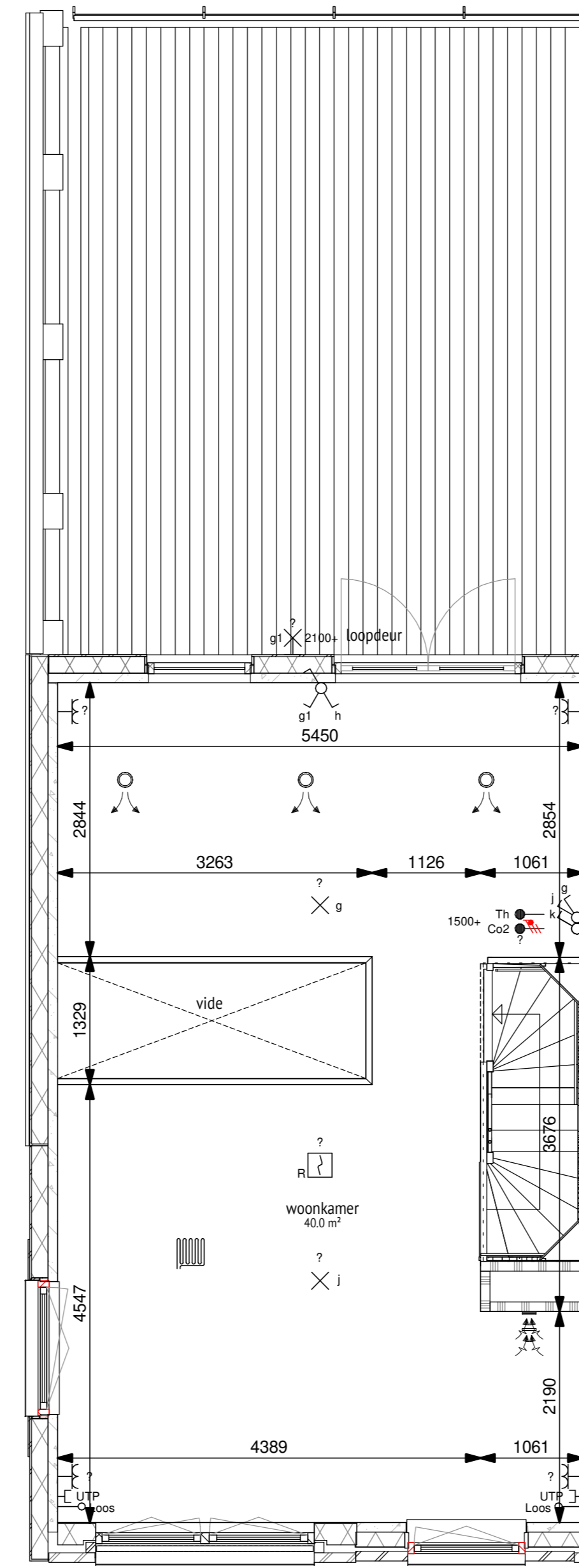


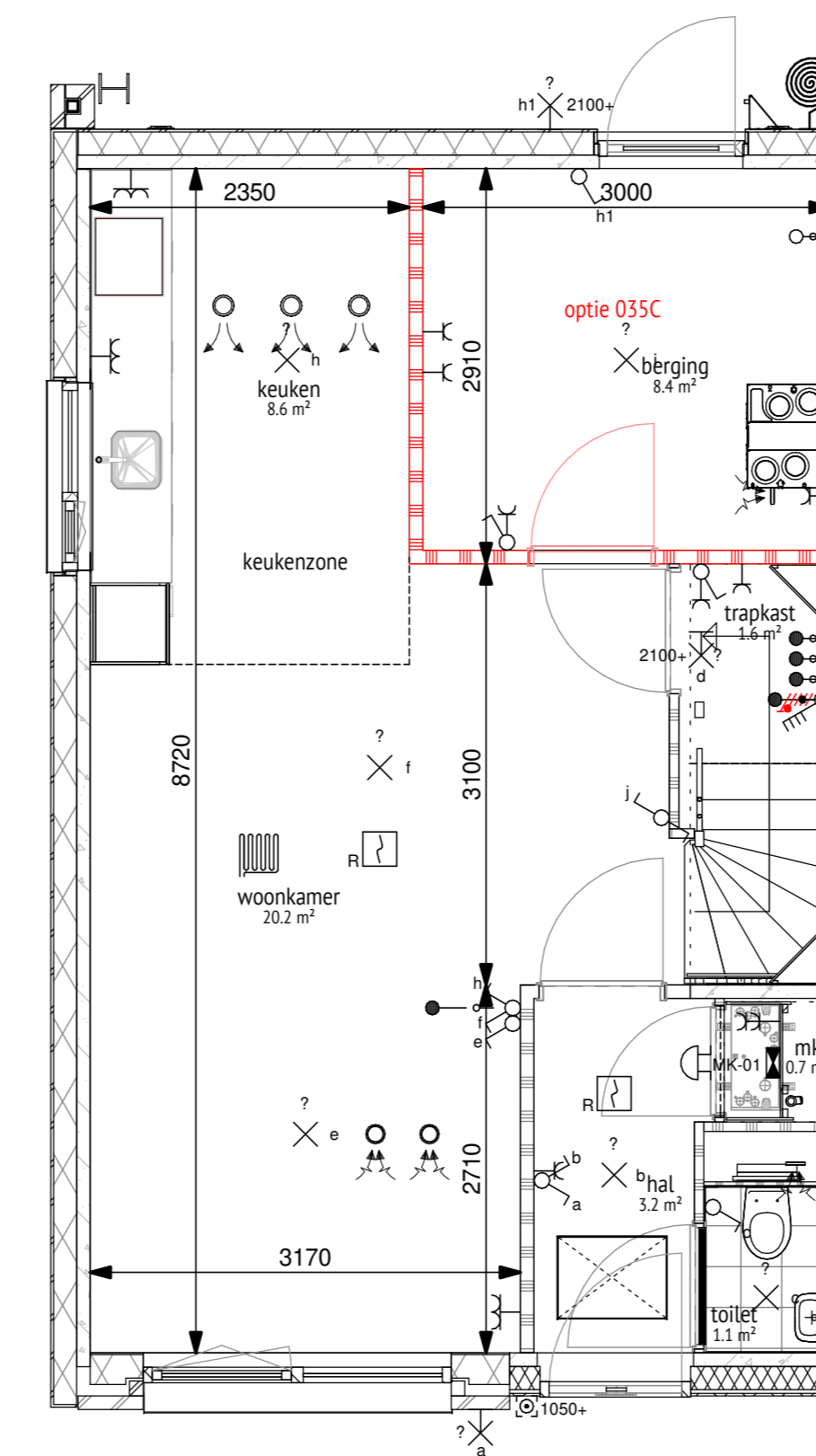
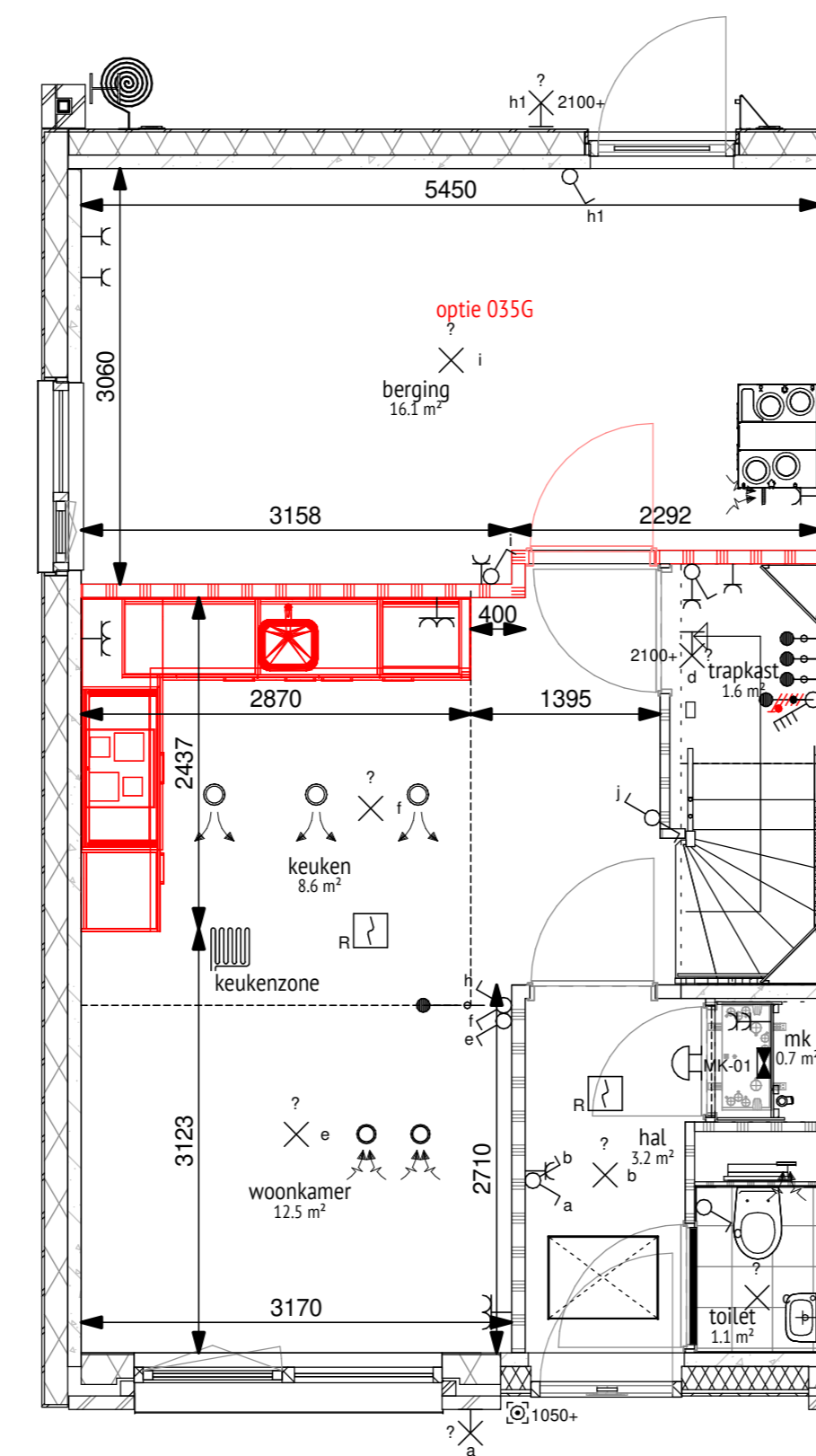
02 tweede verdieping



01 eerste verdieping



00 begane grond



TYPE 09a2/C7

RENVOOI MATERIALEN	
	metselwerk
	profiel beton eps 170mm + 20mm steenstrip
	isolatie
	lichte scheidingwand 100mm / 70mm
	lichte scheidingwand 100mm, geluïswerend
	vloerbeton
	basis woning
	optie woning

DAAD	opdrachtgever	Trebbe
	werk	Newton Park Enschede
DAAD Architecten B.V.	onderwerp	Bouwnummer 66 - opties
	gewijzigd	
Paltz 21 9411 PM Bellen Nederland +31(0)593 582 450 info@daad.nl	a.	datum 01-06-2022
	b.	schaal 1:50
c.	d.	formaat A0
	e.	werknr. 20008
f.	bladz.	DO.162
g.		

C:\Users\Bouwen\Documents\Newton Park Enschede\DAAD_ARCHITECTEN\TYPE 09a2\C7_001_002.dwg